

imProvável

EVELYN KAHN

In one of her most famous novels, Isabel Allende writes that “photographs deceive time”. I would add that they suspend time – but they do more than just that. The photographer’s talent additionally transforms the very concept of space: first, freezing it, and then opening it up to a new horizon of possibilities, limited only by our gaze.

This is precisely what we see in Evelyn Kahn and her photographic repertoire, beautifully reflected in this new exhibition. It brings together seemingly improbable elements: faces that stare at us, people in their most varied daily lives, unique moments that become immortalised, clashing colours and textures. Places, cities, landscapes converge. We are accustomed to Evelyn’s captivating style, which often transports us to other forms of art – paintings first and foremost – and here we find the intersection of the worlds her lens captures.

As a master of photographic art, Evelyn’s sensitivity suspends and transforms the dimensions of time and space. She transcends time and transforms space. And here we can see her at her best, in her various expressions and forms. In short, we have the opportunity to rediscover her entire talent – a talent that questions, touches and speaks to us without filters.

CARLOS MOEDAS
MAYOR OF LISBON

Inventing the world - what we cannot see can, even so, be real.
GERHARD RICHTER

Photography always surprises me,
with lasting and renewed surprise, inexhaustibly.
ROLAND BARTHES

Exploring the elements of chance and the interplay between realism and abstraction, Evelyn Kahn in her photographs, reinterprets reality through her capacity of perception and enormous aesthetic sense. For this exhibition entitled *Improvável*, 41 photographs were selected, taken in different times and places. Organised into pairs, not always immediately obvious, the selection follows an aesthetic and a very personal poetic sense of the artist.

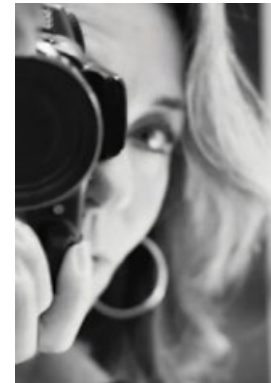
Some of Evelyn's photographs can easily be seen as paintings given the remarkable way she displays a persuasive detail within all the textures of the image, which is delivered through her lens, onto the surface. Reflecting on the photographic image as a drawing, she freely uses lines, shapes, textures and colours – elements intrinsically linked to our lives. She invites us to scrutinise the details, guiding our gaze towards backgrounds with the aim of showing us the majesty of the small detail. Much like a painter creates their work, Evelyn expresses herself artistically through her camera, working with light, colour and shadow, exploring this chromatic play by creating improbable images that impress with their visual beauty.

I hope that in our world of great uncertainties, this exhibition will take us to magical places and afford us a special moment where we can appreciate the enigmatic and poetic fragments that Evelyn brilliantly shares with us. By capturing her nuances, we can experience the many sensations her work provokes and allows us the gift of surprise, looking at art as a human affirmation.

RITA LOUGARES
CURATOR



HACIENDA DE SAN ANTONIO, 2019



Evelyn Kahn, daughter of German parents, was born and raised in Portugal. She graduated in interior design from the Ricardo Espírito Santo Silva Foundation (1964-1967), followed by the Inchbald School of Design in London (1969). Photography has always been present in her life but it was only in later years that she decided to further explore this art with a course at Ar.Co (1998-2001), turning her passion into a life project.

Her inspiration arises from the object, from the angle that reveals it, in that unique way that Evelyn has of looking at the world. Details, textures and reflections have always been the focus of her lens, as well as the portrait, through human contact and the intimacy conquered step by step, until the moment when the soul allows itself to shine through. Inspiration comes from her travels, her everyday life, from the smallest and most unexpected details that touch her.

Evelyn has participated in several solo and group exhibitions, notably at the Giefarte Gallery, by Maria da Graça Carmona e Costa, at the Pequena Galeria and at Fidelidade Arte. She has collaborated on projects with institutions such as the Champalimaud Foundation, various interior design studios and hotel groups (Tivoli, PHC and Vila Sol), having collaborated for over 15 years with ConVida (Lisbon and Porto city guides). Her photographs are part of private art collections in Portugal and abroad.

Born in an era before social media, Evelyn feeds her Instagram account daily, to share her work. The show at the Museu Medeiros e Almeida is the largest exhibition of her work to date.

evelynkahn.com



The work of Evelyn Kahn transports us to a dreamlike universe where colour palettes in their many variations, and the diversity of textures, shapes, places and faces accompany us on this 'Improbable' journey between the real and the imaginary.

The Medeiros e Almeida Foundation and Museum are pleased to present a selection of the Artist's works and invite our Visitors to participate in this 'Improbable' journey.

SIMONETTA LUZ AFONSO
MEMBER OF THE BOARD OF TRUSTEES - MEDEIROS E ALMEIDA FOUNDATION



CASCAIS, 2017



MARRAKECH, 2012



CAIS PALAFÍTICO, 2020



COMPORTA, 2021



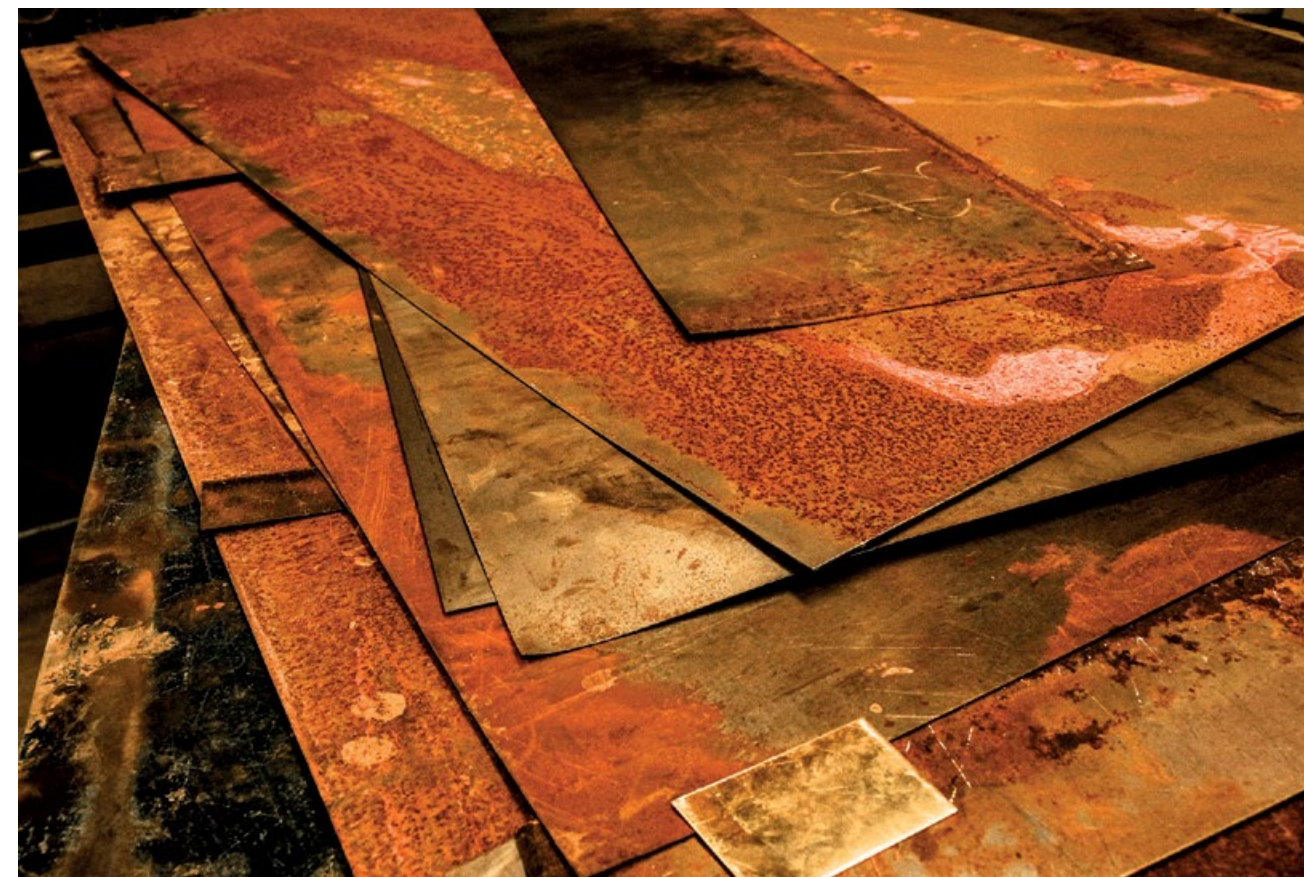
CASCAIS, 2018



LUANG PRABANG, 2011

'Improbable' is the proof that, fortunately, we continue to be able to surprise ourselves, and learn from what we cannot foresee.

FRANCISCO PINTO BALSEMÃO
JOURNALIST, POLITICIAN AND ENTREPRENEUR



GERÊS, 2020



ALGARVE, 2022



SRI LANKA, 2023



MADRID, 2020



ALGARVE, 2023



CASCAIS, 2020



LISBOA, 2022



COMPORTA, 2022

'Improbable' reveals the subjectivity of our judgement, as what is uncertainty and fear for some, is certainty and comfort for others. Where some prefer to not see, others see an opportunity waiting to be discovered.

JOSÉ AVILLENZ
CHEF



CAIS PALAFÍTICO, 2021



HAMBURGO, 2016



PORTO, 2022



LISBOA, 2018



MYANMAR, 2002



TROIA, 2022



CAIS PALAFÍTICO, 2021



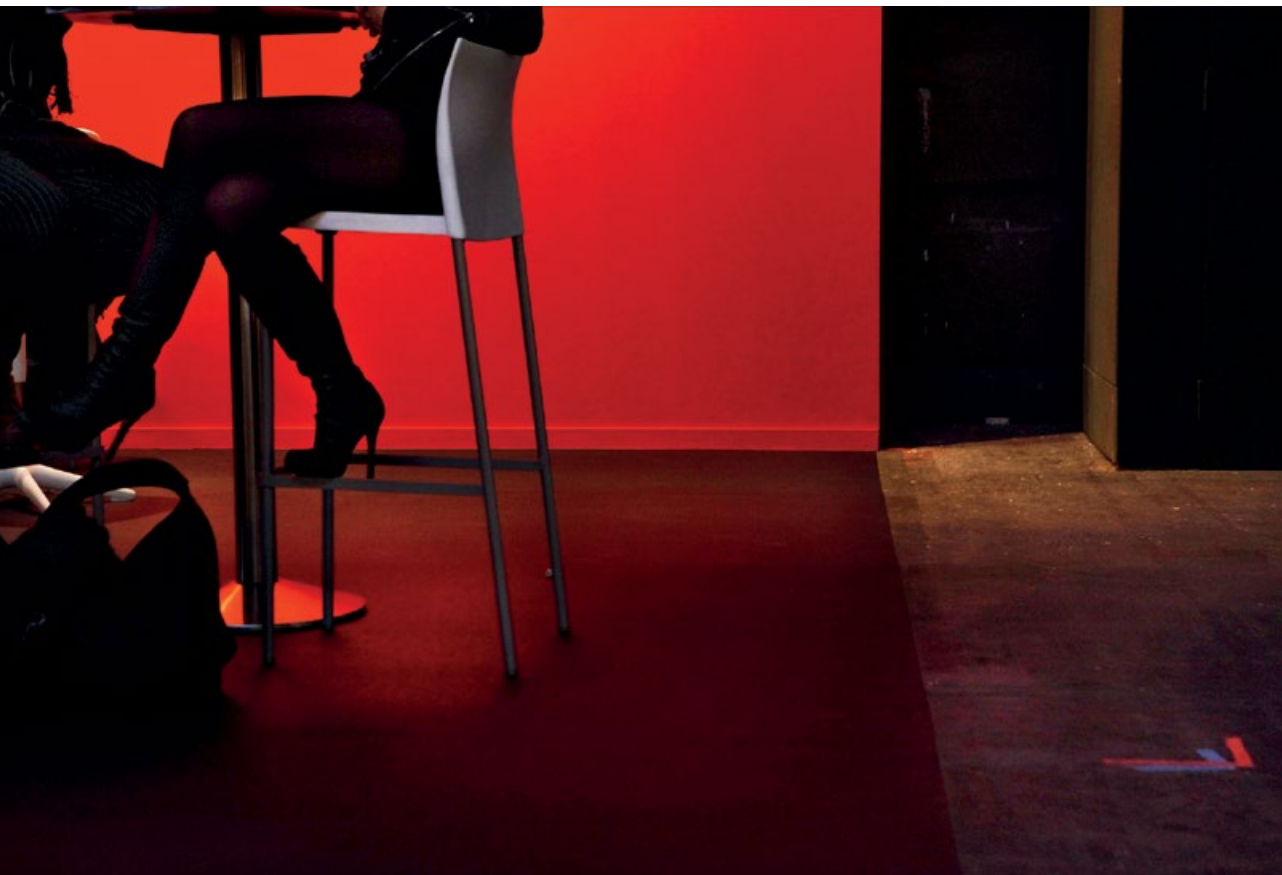
ANTUÉRPIA, 2014

The world is infinite. Rich, diverse, complex. So vast that, at times, it is indecipherable. The gaze of others, artistic, poetic, creative. It is a window into the world, it is an entryway.

The beauty of things is often perceived through the revelations provided by others' choices. A wake-up call to aspects of reality that we had not been aware of.

The choice, the framing, the establishment of relationships between realities through someone's vision, build possibilities for reflection, discoveries, and wonder for others.

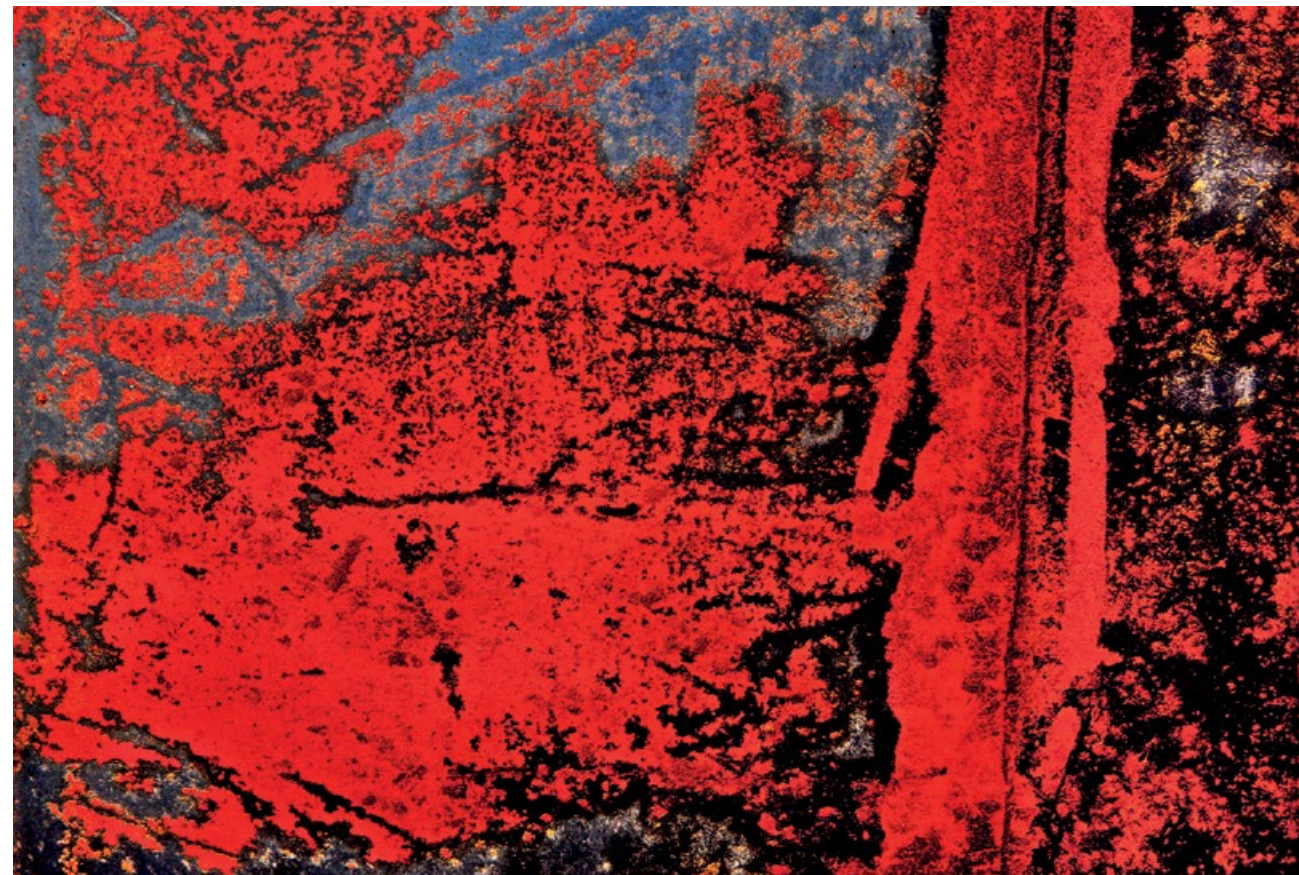
MANUEL AIRES MATEUS
ARCHITECT



MADRID, 2011

Evelyn Kahn, an irreverence in the world of photography.
Her perspective brings us images of talent, imagination and improbable exactness.
“Le beau est toujours bizarre” as the Poet would say.

GRAÇA VITERBO
INTERIOR DESIGNER



ALENTEJO, 2012



COMPORTA, 2023



MADRID, 2020



LISBOA, 2024



CIDADE DO MÉXICO, 2023



DEOGARH, 2007

The improbability of the parallels between the photographs reveals how seemingly disconnected scenes can reflect facets of the same unexpected reality.

MARIA JOSÉ REGO DE SOUSA
DOCTOR AND ADMINISTRATOR GERMANO DE SOUSA GROUP



RIO DE JANEIRO, 2024



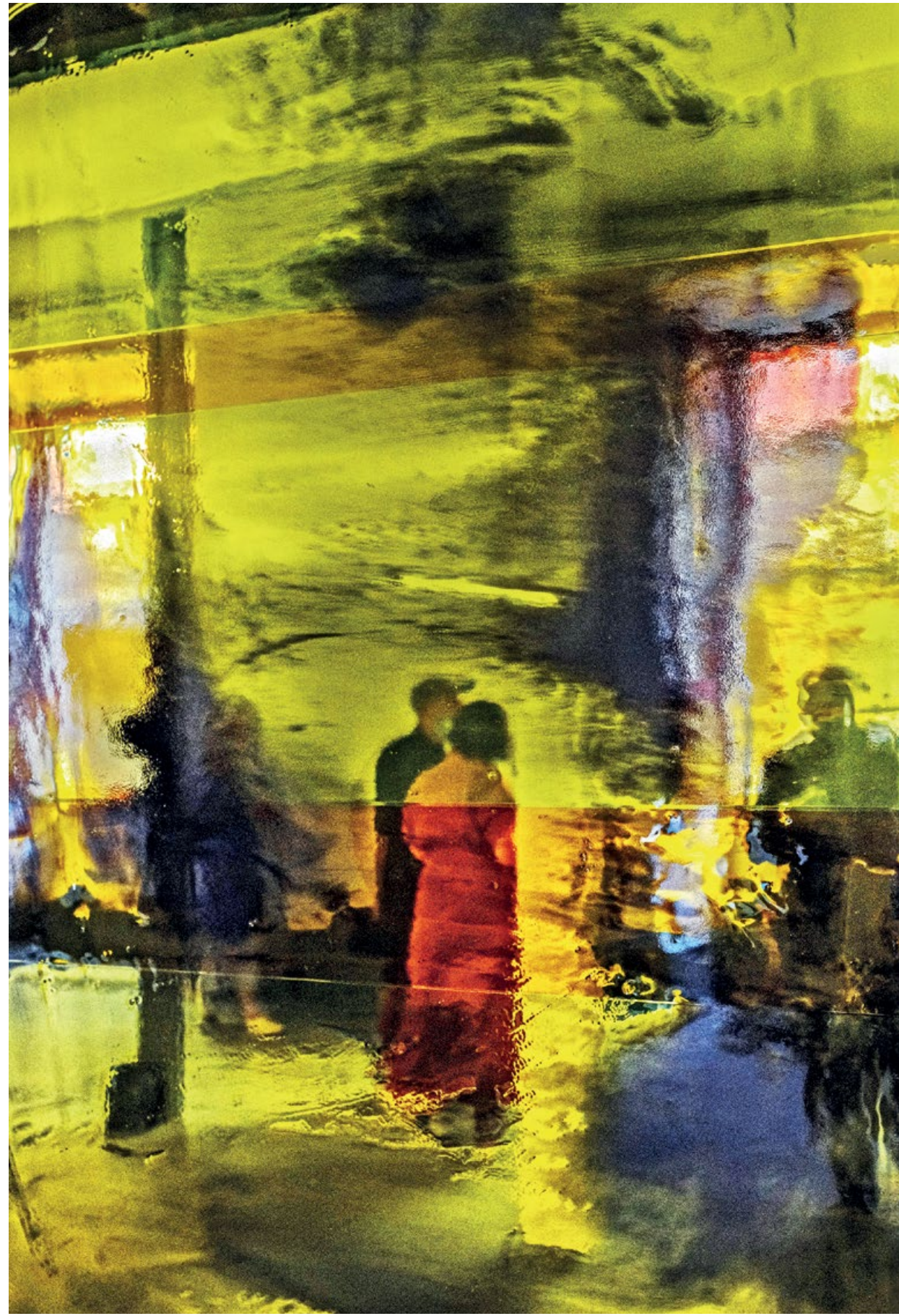
DEOGARH, 2007



LONDRES, 2024



MARRAKECH, 2012



LISBOA, 2022



CASCAIS, 2018

“You may say I’m a dreamer, but I’m not the only one”
(...) John Lennon and Yoko Ono lived a love story in a world of improbabilities.
It would be unlikely that I should write about them today,
but a song caught me off guard.

INÊS MENESES
COMMUNICATOR



LISBOA, 2014



HANOI, 2011



ALGARVE, 2017

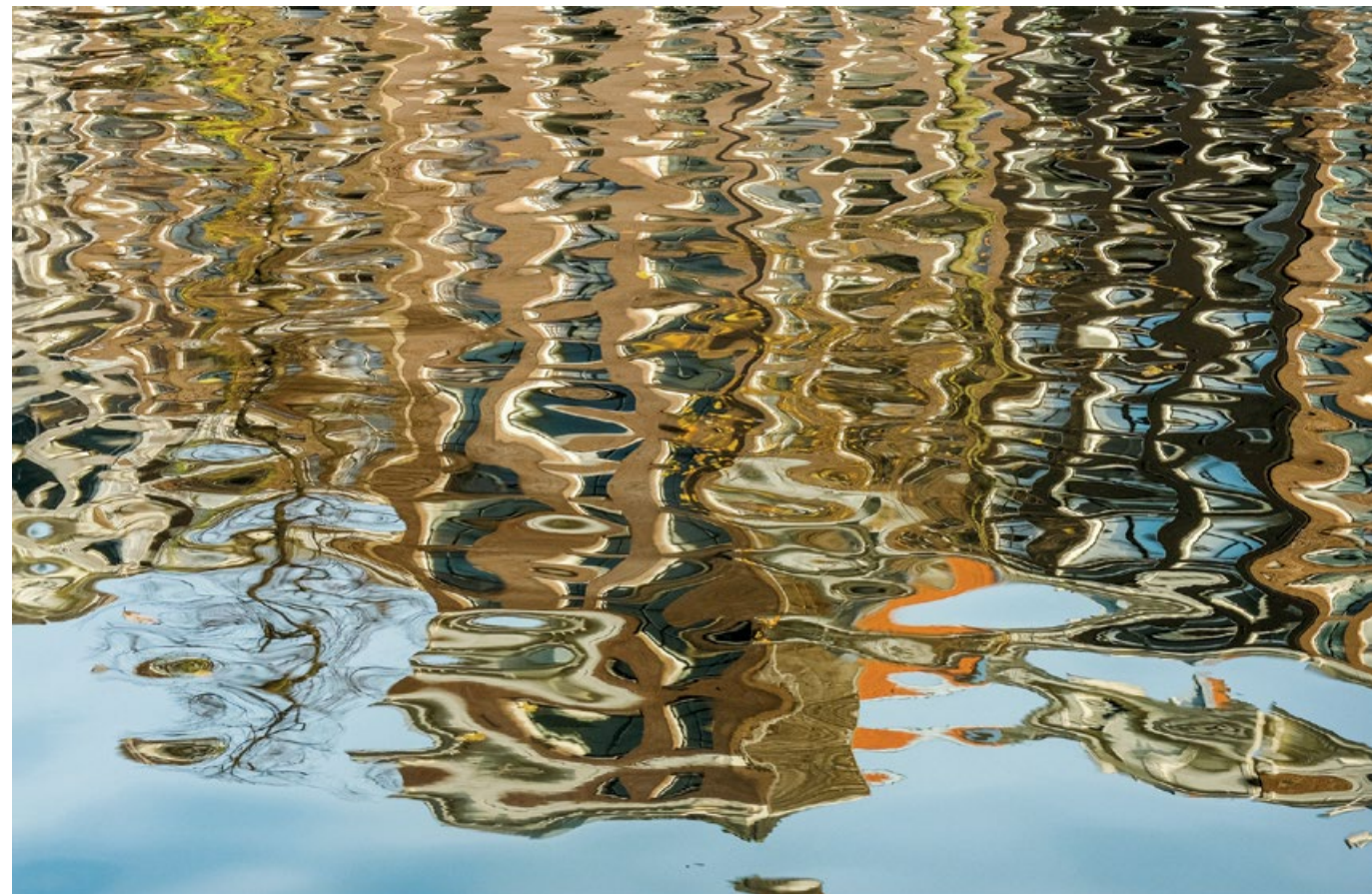
The Improbable does not exist
if we always go where
our heart wishes to take us.
The impossible becomes possible
and the unlikely opens up like
an unexpected light in this brief dream
that is life.

FILIPE LA FÉRIA
DRAMATIST AND DIRECTOR

DEOGARH, 2007



AMSTERDÃO, 2022



PHOTOGRAPHS

© Evelyn Kahn 2024

Limited series: editions of 5 copies + artist's proof

Pigment print on 100% cotton Fineart paper

Exhibition · Museu Medeiros e Almeida
10th October to 9th November

CURATION

Rita Lougares

PROJECT MANAGEMENT

Sofia Paiva Raposo

GRAPHIC DESIGN

Kahn Atelier

Sofia Paiva Raposo

Inês Fonseca

POST-PRODUCTION

Fineprint · Nuno Soares

PRINTING

M2 Artes Gráficas

PRINT RUN

300 exemplares

DEPÓSITO LEGAL 538210/24

ISBN 978-989-336737

October 2024

ACKNOWLEDGEMENTS

Carlos Moedas

Filipe La Féria

Francisco Pinto Balsemão

Fundação Medeiros e Almeida

Graça Viterbo

Inês Fonseca

Inês Meneses

Joana Ferreira

João Carlos

José Avillez

Katya Delimbeuf

Katya Krausova

Manuel Aires Mateus

Maria José Rego de Sousa

Maria de Lima Mayer

Nuno Soares

Petko Angelov

Pureza Mello

Rita Lougares

Simonetta Luz Afonso

Sofia Paiva Raposo

